

Persistence, Retention, & Graduation Rate Data

Based on report to Teacher Education Council 2/11/22

For 2020-21 Assessment Cycle

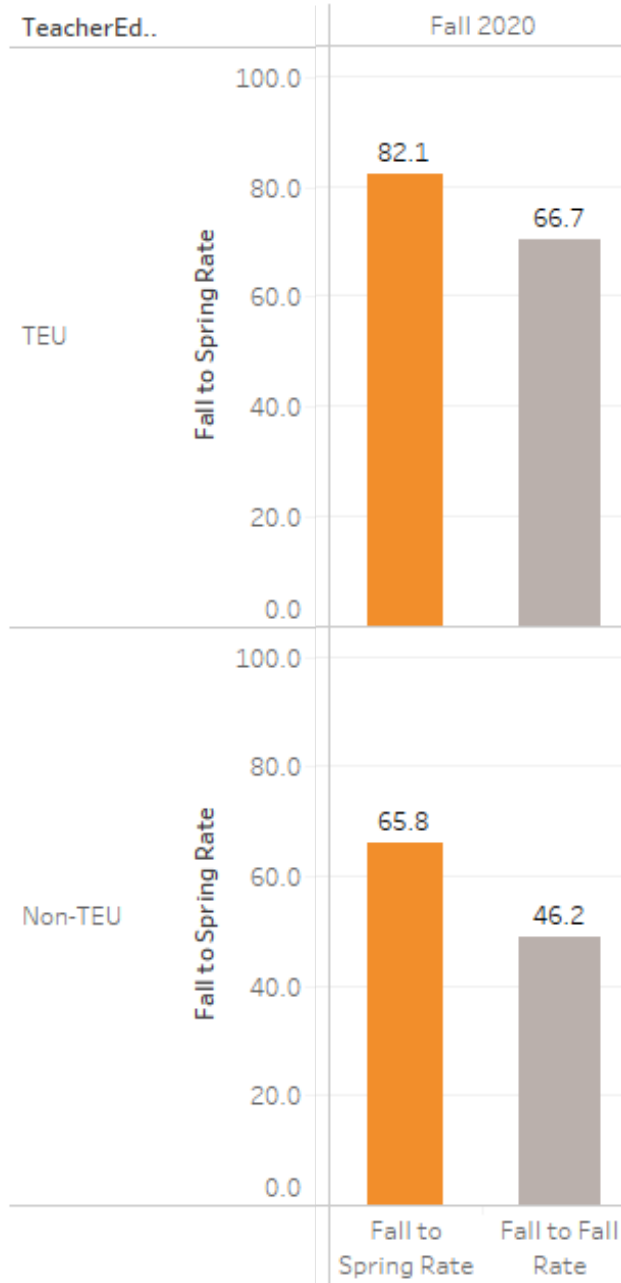
Teacher Education Unit

Buffalo State College

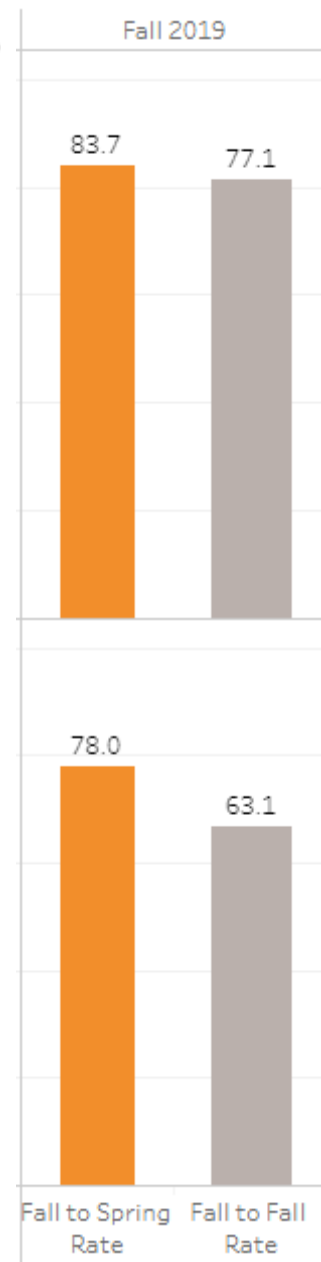
Persistence & Retention Data

Persistence & Retention TEU vs Non-TEU (BSC w/o TEU included)

Fall 2020



Fall 2019



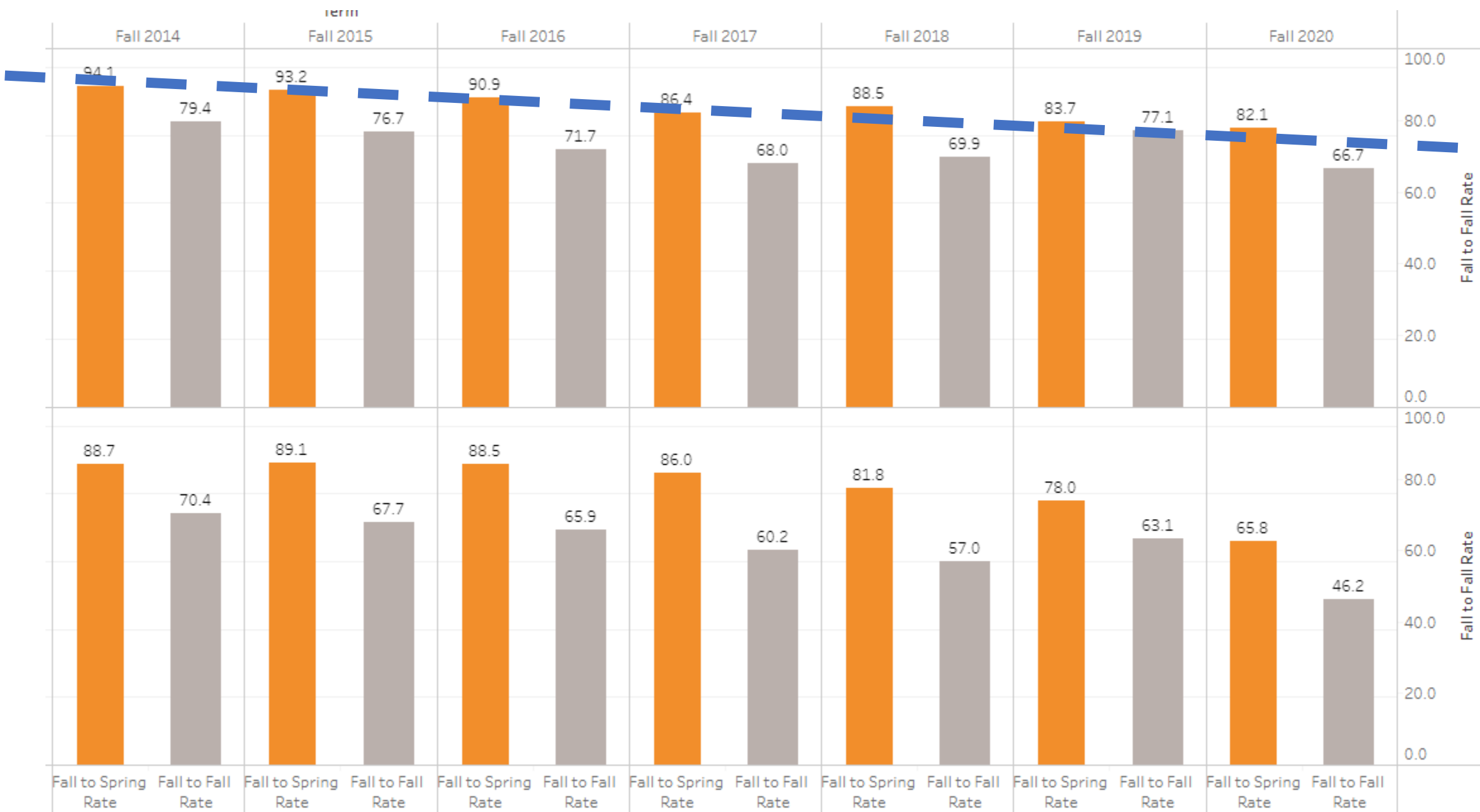
Persistence:

Start Fall and Return Spring

Retention:

Start Fall and Return Following Fall

Persistence: Slight Decreasing Trend since 2014 (95% vs 82%)



Graduation Rate Data

By 4-year, 5-year and 6-year rates

- Compares TEU to Non-TEU programs
- Non-TEU = all other BSC students (excluding TEU)
- Applies to undergraduate only
- [Dashboard](#) prepared by Yves Gachette exclusively for TEU

Graduation Rate TEU vs Non-TEU (BSC w/o TEU included)



Term
All

TeacherEdUnit
All

School
All

Department
All

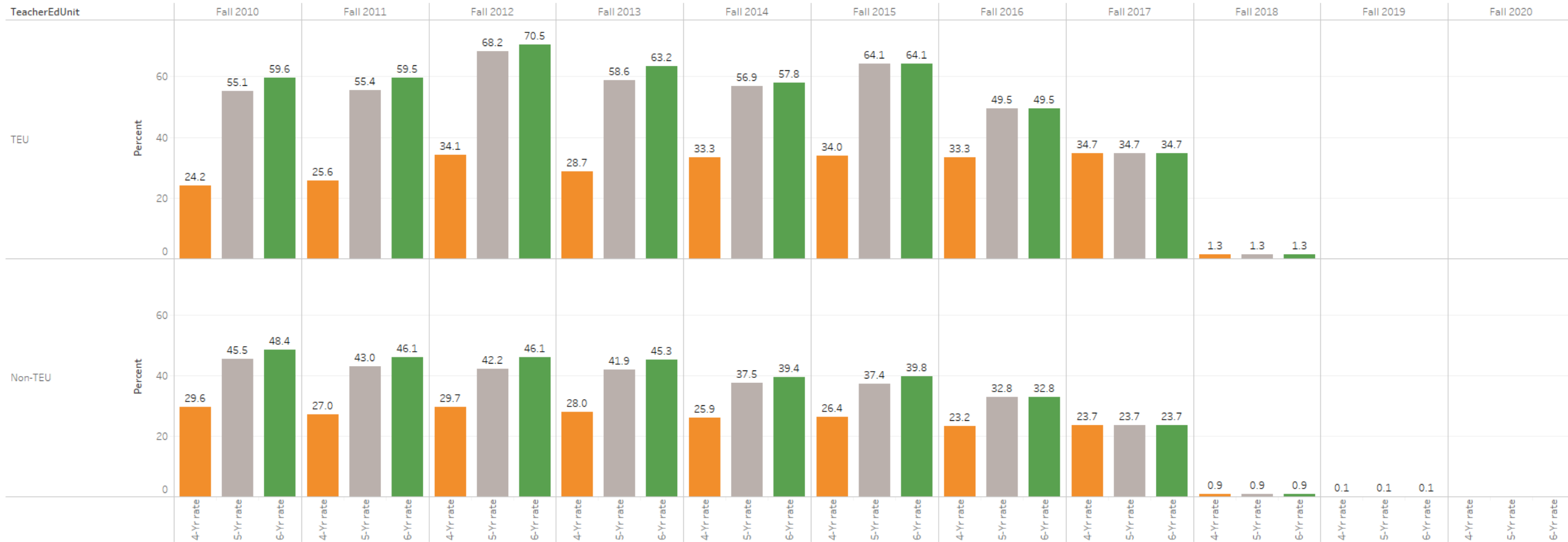
Major_Desc
All

Program
All

This dashboard allows the user to expand from TeacherEdUnit to Department and Department to Major and Major to Program by [mouseover](#) TeacherEdUnit on the left side and click the (+) sign to expand to Major Level and mouseover to the Major on Top of the Chart and click (-) sign to collapse back to Program, Major, Department and to TeacherEdUnit

Four, Five and Six-Year Graduation Rate (TEU vs Non-TEU)

All;All;All;All;All



Graduation Rate TEU vs Non-TEU

4-year rates

5-year rates

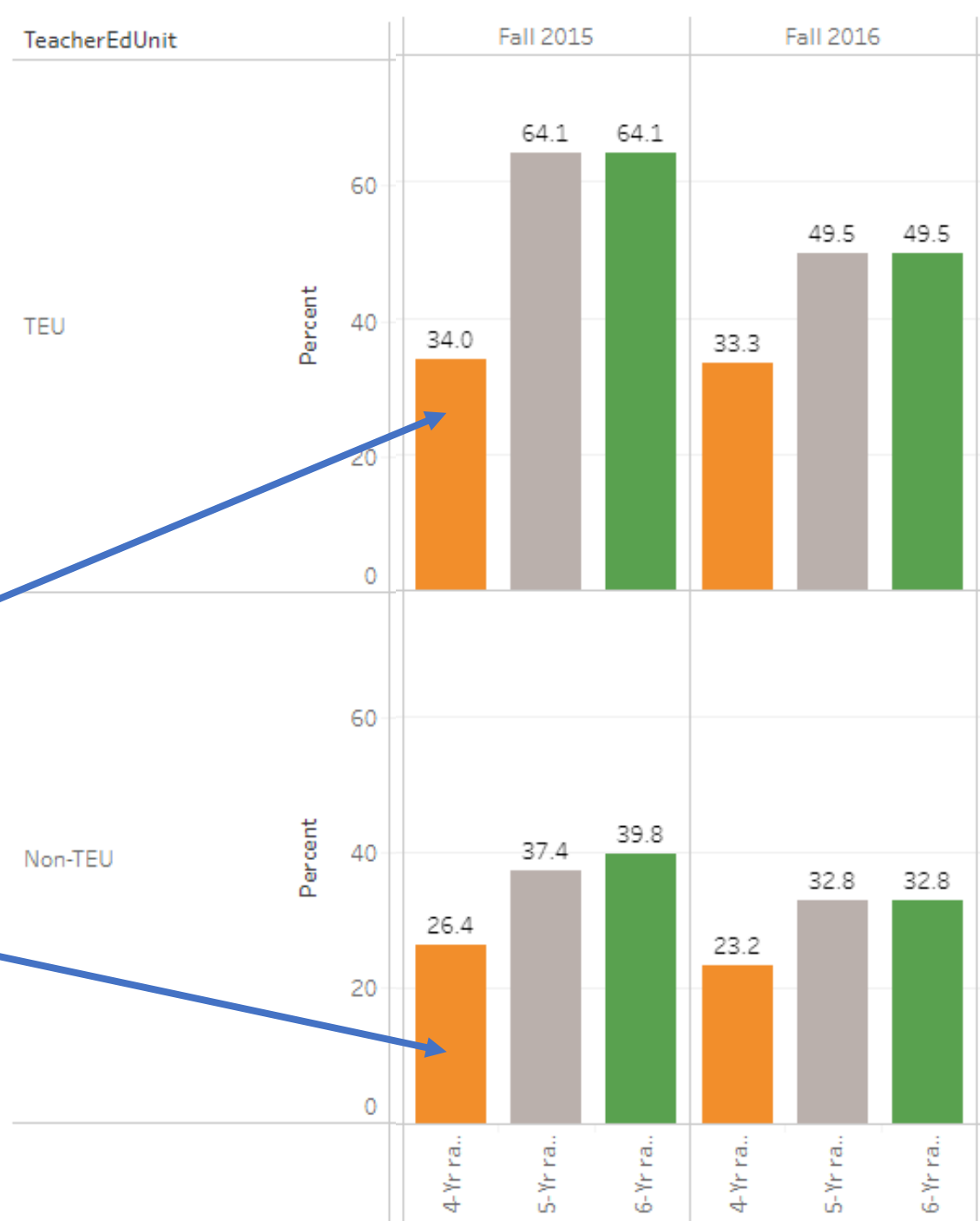
6-year rates

e.g.,

Those who started in 2015

TEU's 4-year grade rate is 34%

NonTEU's 4-year grade rate is 26.4%



Graduation Rate TEU Only – Disaggregated by Race/Ethnicity



Term
All

TeacherEdUnit
TEU

School
All

Department
All

Major_Desc
All

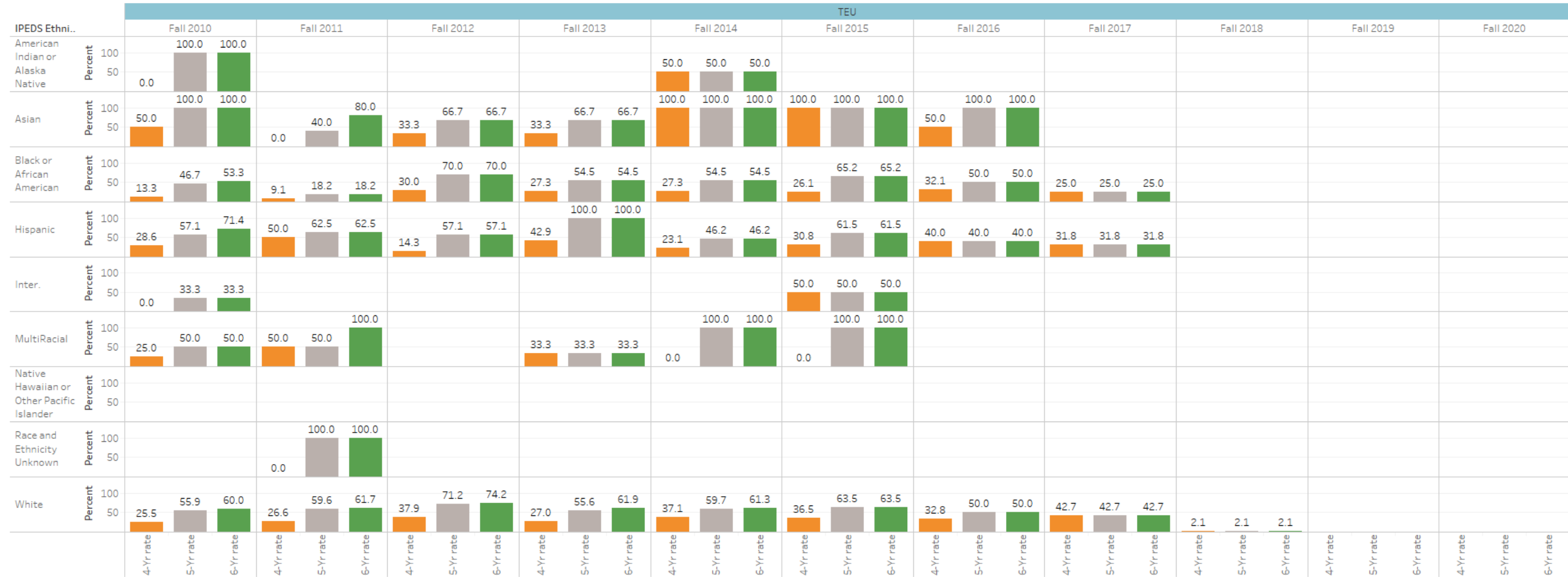
Program
All

IPEDS Ethnicity
All

Gender
All

Four, Five and Six-Year Graduation Rate (TEU vs Non-TEU)

All;All;All;All;All;All;All



Graduation Rate TEU Only – Disaggregated by Race/Ethnicity

4-year rates

5-year rates

6-year rates

Noteworthy:

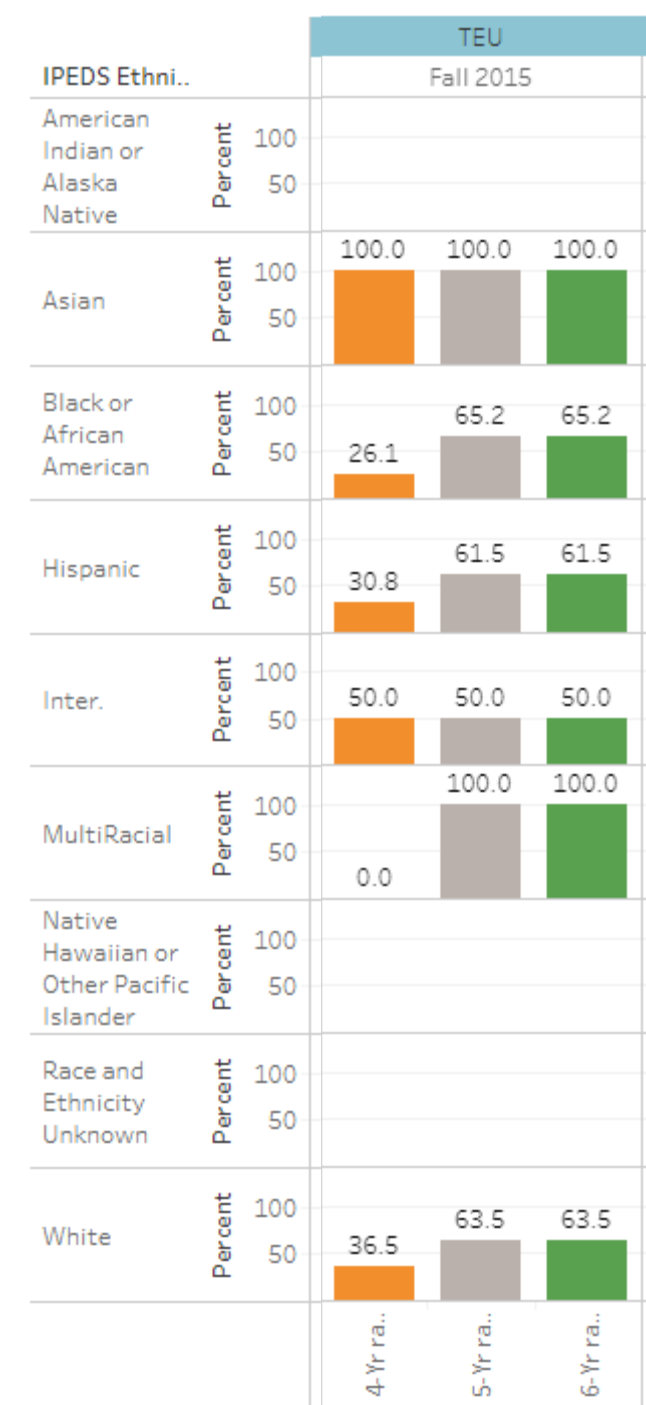
- *AA and Hispanic candidates have lower rates of 4-year graduation compared to white (26, 30, 36 %)*
- *At 5-years, seems to even out (65, 61, 63 %)*
- *All candidates appear to graduate in no more than 5 years.*

See [Dashboard](#) for “N”

e.g., 4-year numbers

N= 23 AA

N= 63 White



Graduation Rate TEU Only – Comparing Students of Color to Non-Student of Color

4-year rates

5-year rates

6-year rates

